

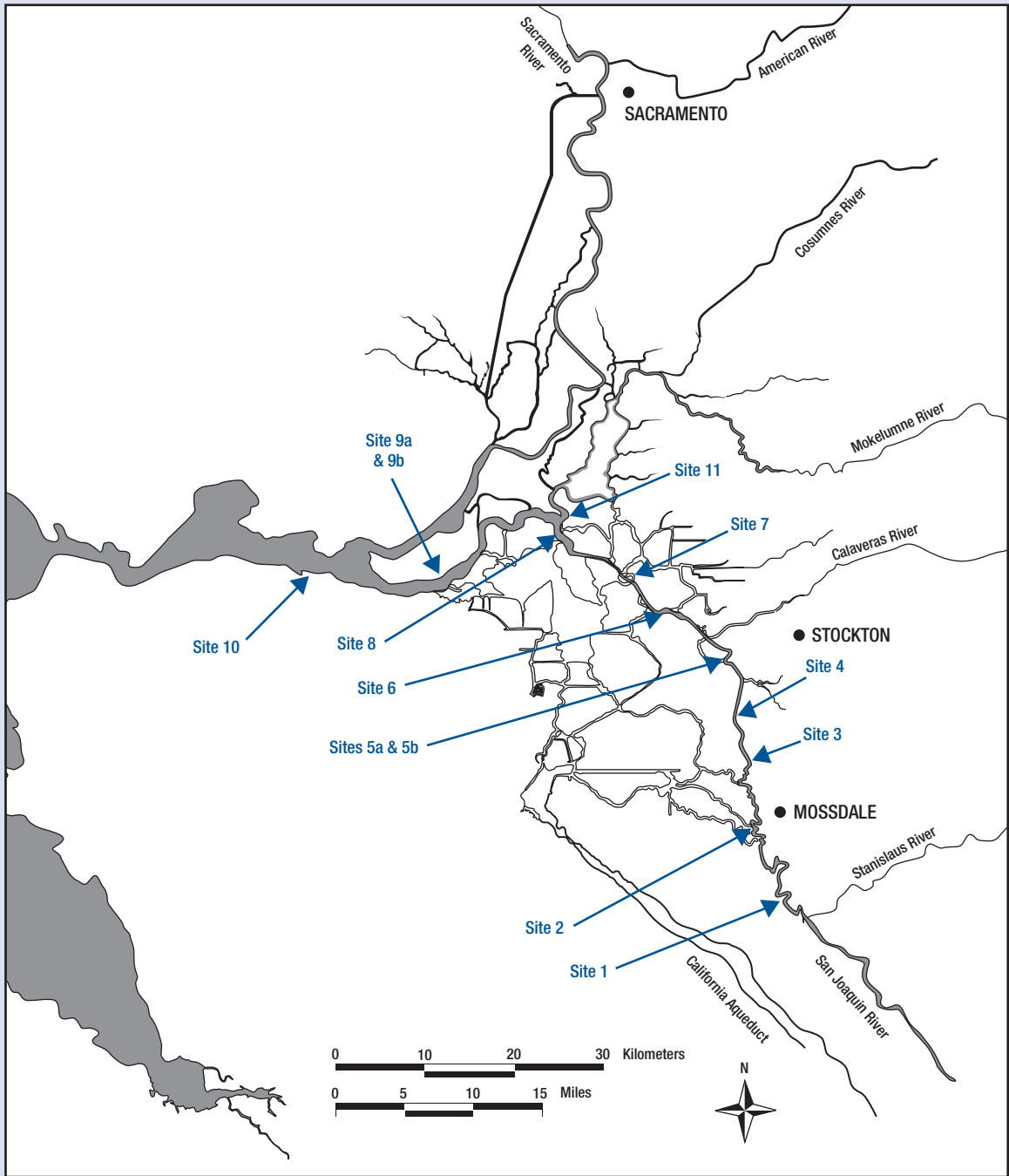


APPENDIX C

Chinook Salmon Survival Investigations

APPENDIX C

C-1. Water Temperature Monitoring Locations

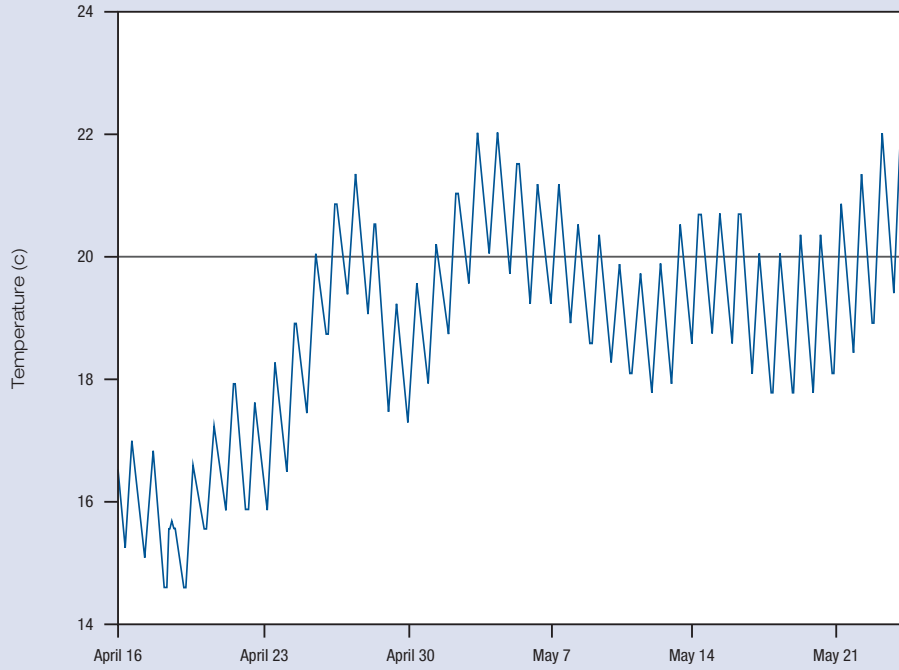


C-1. VAMP 2004 Water Temperature Monitoring

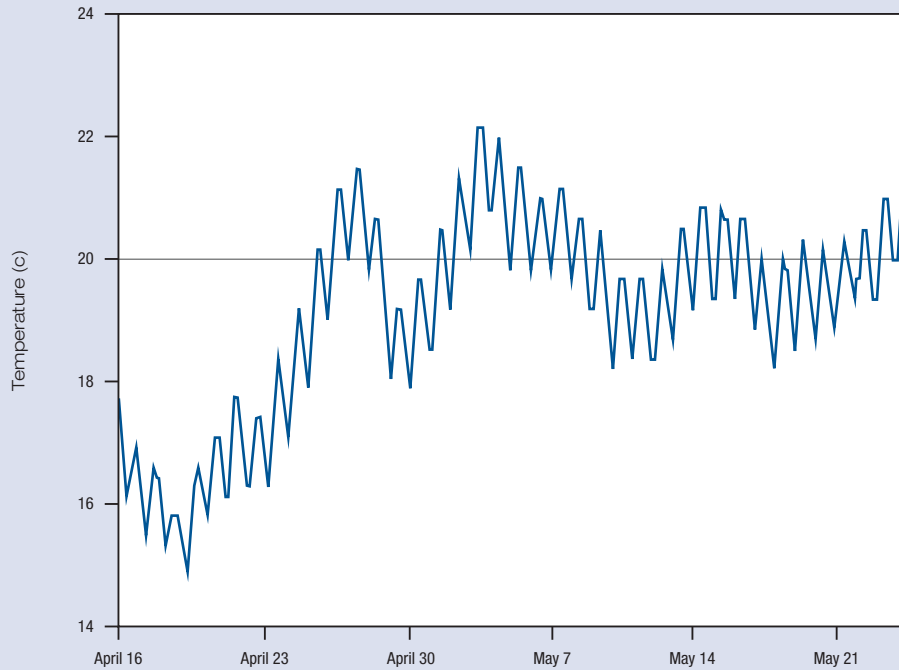
Temperature Monitoring Location	Latitude	Longitude	Distance from Durham Ferry (mi)	Date Deployed	Date Retrieved	Notes
Merced River Hatchery-1			n/a	March 18	April 24	In river April 22, 2004 at Durham Ferry
Merced River Hatchery-2			n/a	March 18	April 25	In river April 23, 2004 at Mossdale
1 Durham Ferry	N 37 41.381	W 121 15.657	n/a	April 15	May 25	3 foot depth
2 Mossdale	N 37 47.180	W 121 18.425	11.2	April 15	May 25	3 feet below surface
3 Dos Reis	N 37 49.808	W 121 18.665	16.4	April 15	May 25	3 feet below surface
4 DWR Monitoring Station	N 37 51.869	W 121 19.376	19.4	April 15	May 25	3 feet below surface
5a Confluence-Top	N 37 56.818	W 121 20.285	26.5	April 15	May 25	Logger Malfunction
5b Confluence-Bottom	N 37 56.818	W 121 20.285	26.5	April 15	May 25	Located on bottom
6 Downstream of Channel Marker 30	N 37 59.776	W 121 25.569	33.3	April 15	May 25	3 feet below surface
7 1/2 mile Upstream of Channel Marker 13	N 38 01.940	W 121 28.769	37.3	April 15	May 25	3 feet below surface
8 Downstream of Channel Marker 36	N 38 04.522	W 121 34.413	44.7	April 15	May 25	3 feet below surface
9a Jersey Point USGS Gauging Station-Top	N 38 03.172	W121 41.637	56.0	April 15	May 25	3 feet below surface
10 Chipps Island	N 38 03.084	W 121 55.463	71.5	April 15	May 25	4 1/2 feet below surface
11 Mokelumne River-Lighthouse Marina	N 38 06.334	W 121 34.213	40.0	April 15	May 25	Logger malfunction

C-2. Water Temperature Monitoring

Site 1 · Durham Ferry

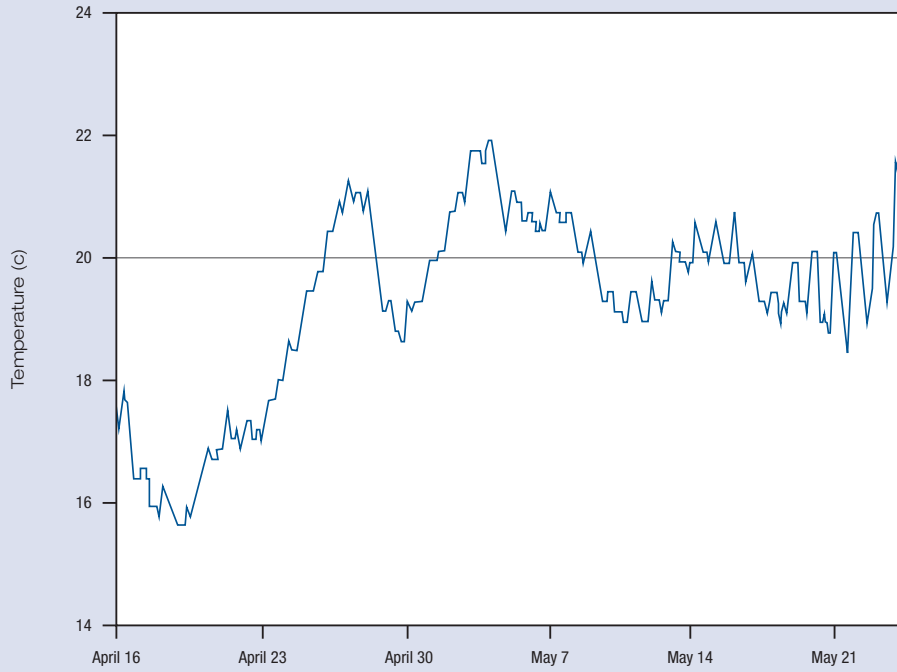


Site 2 · Mossdale

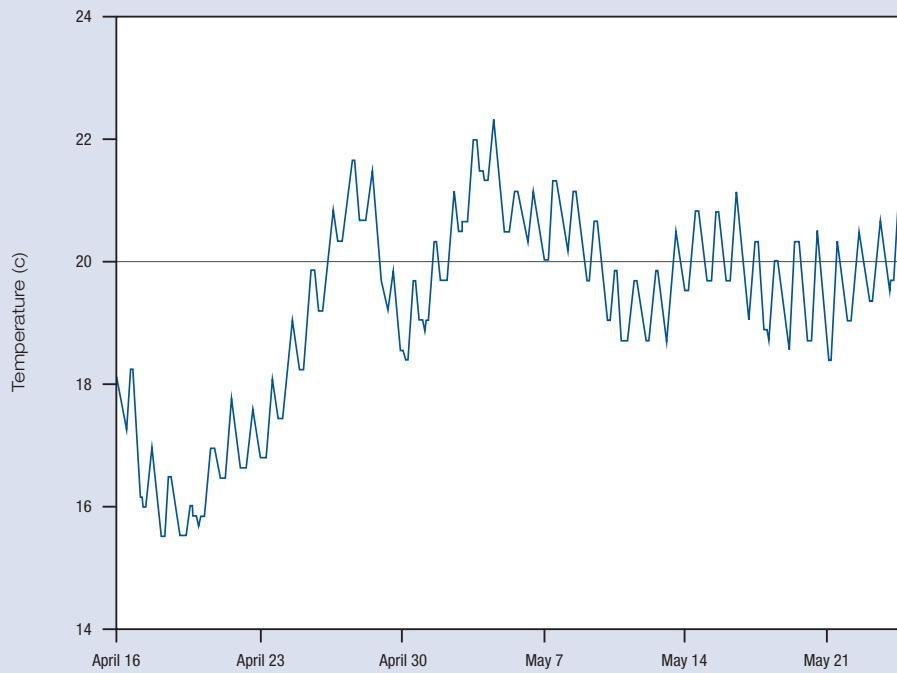


C-2. Water Temperature Monitoring

Site 3 · Dos Reis

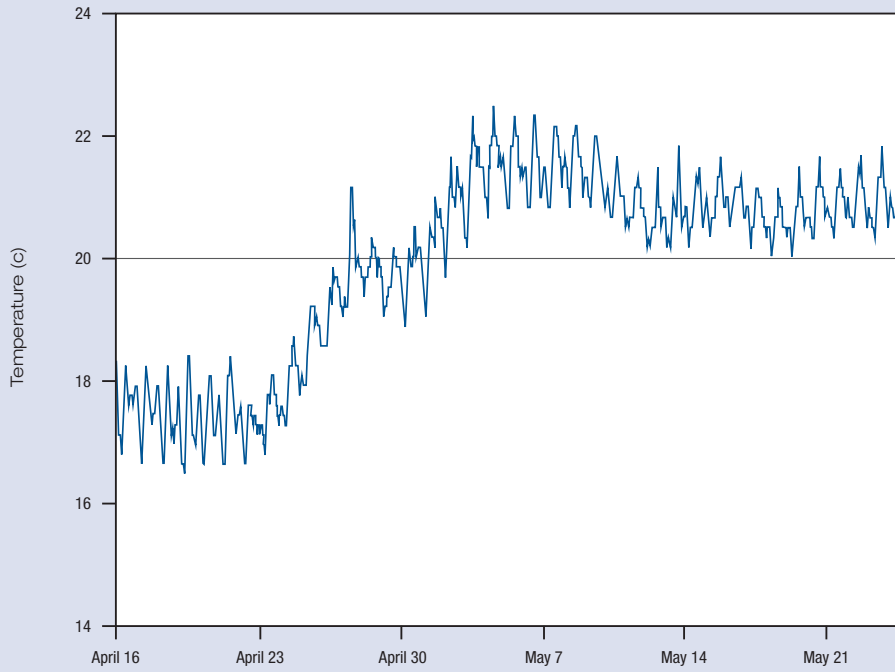


Site 4 · DWR Monitoring Station

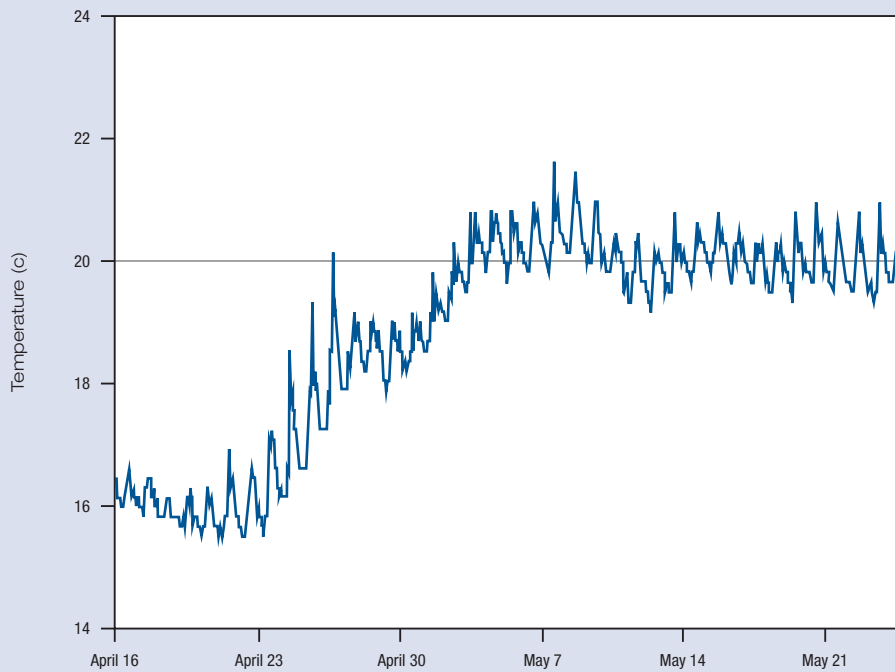


C-2. Water Temperature Monitoring

Site 7 · 1/2 Mile Upstream of Channel Marker 13

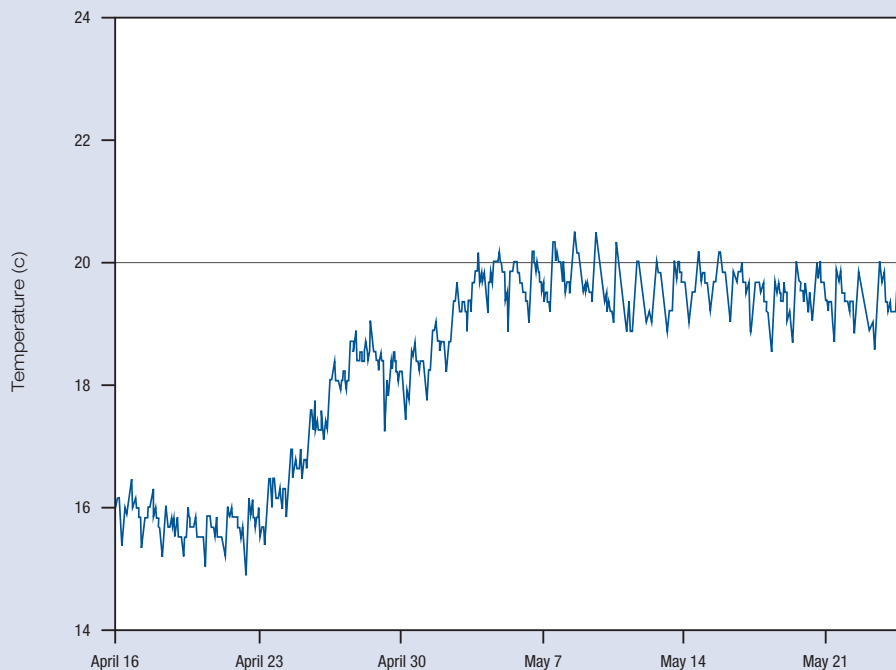


Site 8 · Downstream of Channel Marker 36



C-2. Water Temperature Monitoring

Site 9 • USGS Gauging Station at Jersey Point—Top



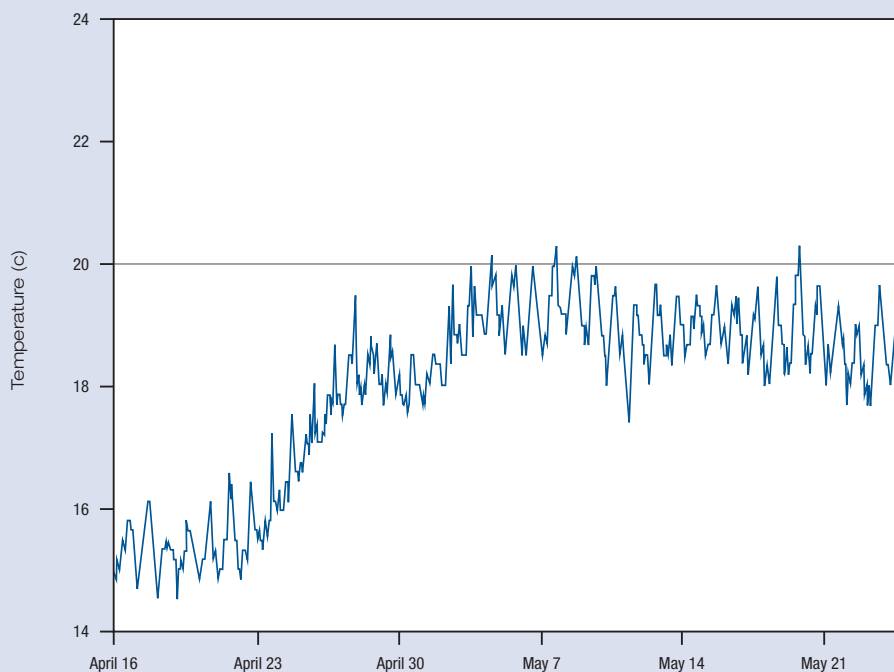
C-3. RESULTS OF NET PEN SAMPLING

a. Condition assessments immediately after release

Release Location	Coded-wire Tag Codes(s)	Number in Sample	Min FL	Max FL	Mean FL	Min Weight	Max Weight	Mean Weight	Min Scale Loss	Max scale loss	Mean scale loss
Durham Ferry I	06-27-52, 06-27-53, 06-27-54, 06-27-55	50	67	94	83.8	3.1	8.7	6.4	0.0	10.0	0.4
Mossdale I	06-46-70, 06-45-82, 06-45-83	75	71	91	83.8	3.4	7.8	6.1	2.0	12.0	5.1
Jersey Point I	06-45-80	25	76	96	89.5	4.5	9.4	7.6	1.0	8.0	3.2

C-2. Water Temperature Monitoring

Site 10 • Chipps Island



Color (% normal)	Fin Hemorrhaging (% none)	Eyes (% normal)	Gill Color (% normal)	Partial Adipose Fin Clips (%)	Missing Adipose Fin Clips (%)	Number of Mortalities	Other Abnormalities and Comments
98	100.0	92	56	0	0	4	44% of fish had pale gills; possible ick. Appx. 150 fish (tag code 06-2-52) spilled onto boat ramp when hose disconnected from truck.
100	98.7	100	100	7	0	3	
100	100.0	100	100	4	0	1	

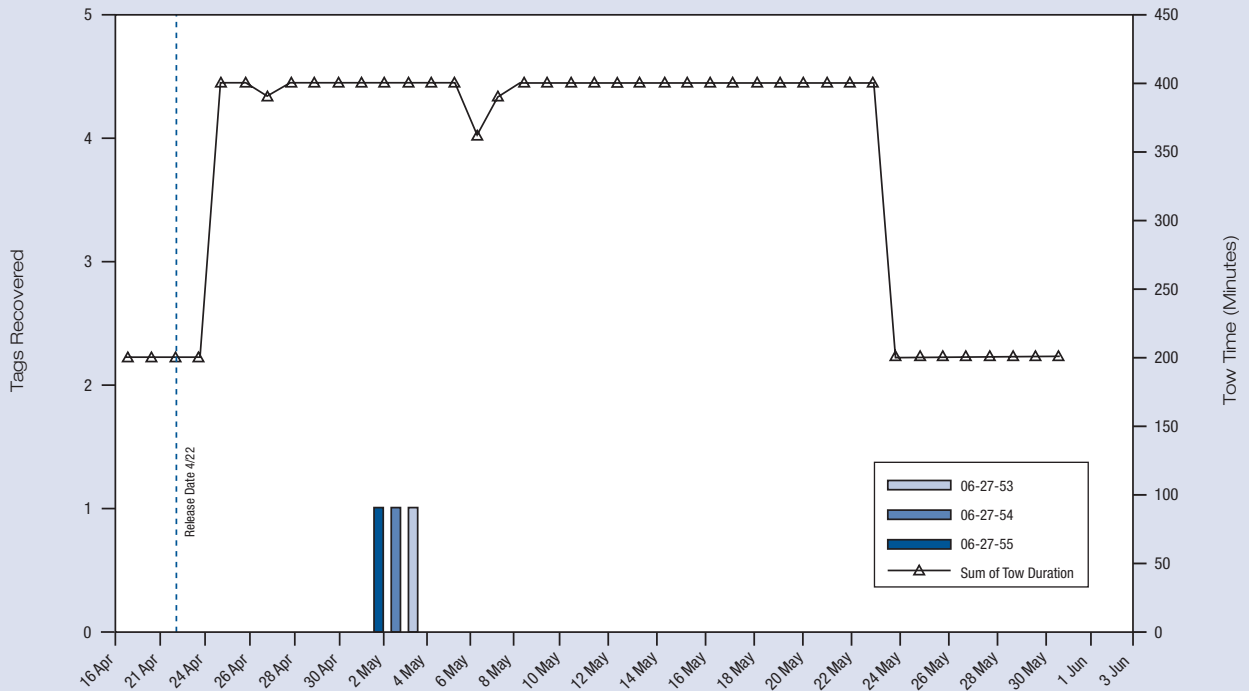
C-3. RESULTS OF NET PEN SAMPLING

b. Condition assessments 48 hours after release (fish held in net pens)

Release Location	Coded-wire Tag Codes(s)	Number in Sample	Min FL	Max FL	Mean FL	Min Weight	Max Weight	Mean Weight	Min Scale Loss	Max scale loss	Mean scale loss
Durham Ferry I	06-27-52, 06-27-53, 06-27-54, 06-27-55	400	60	102	84.9	1.9	11.1	6.2	3.0	15.0	8.0
Mossdale I	06-46-70, 06-45-82, 06-45-83	400	62	100	83.9	2.0	10.4	5.9	0.5	15.0	4.3
Jersey Point I	06-45-80	200	74	100	86.8	4.4	11.1	6.9	4.4	11.1	6.9

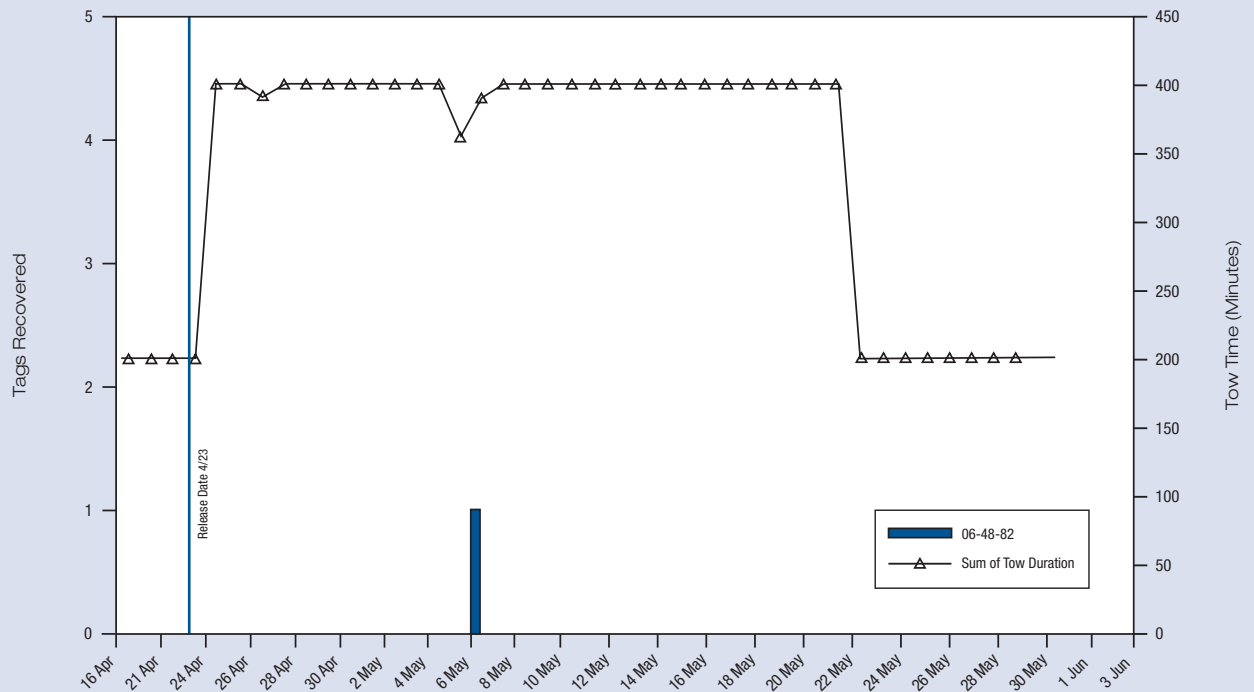
C-4. Coded Wire Tag Recovery Data (Recovery location/Release location)

Chipps Island/Durham Ferry I



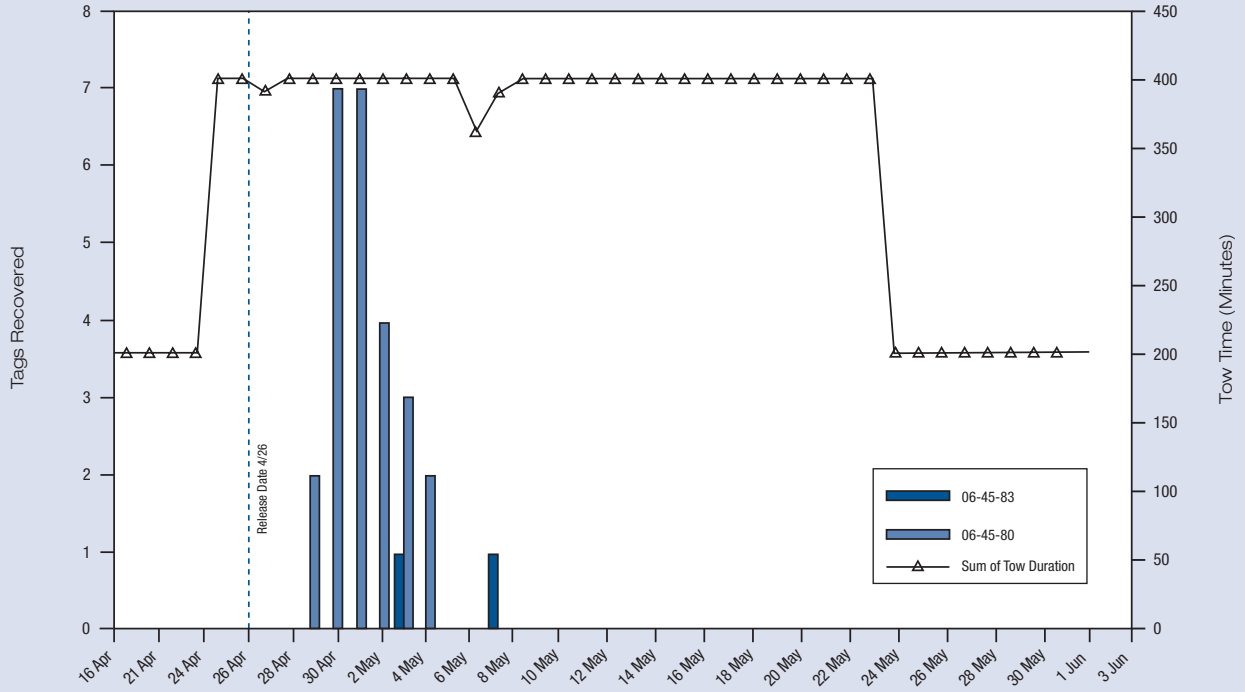
Color (% normal)	Fin Hemorrhaging (% none)	Eyes (% normal)	Gill Color (% normal)	Partial Adipose Fin Clips (%)	Missing Adipose Fin Clips (%)	Number of Mortalities	Other Abnormalities and Comments
100	196	100.0	100.0	6	1	4	1 fish with eroded caudal fin, 1 fish with deformed dorsal fin
100	100	97.3	98.7	3	1	0	1 fish had bulging eyes
100	100	100.0	100.0	2	0	2	2 fish had possible ick spots

Chippis Island/Mossdale I

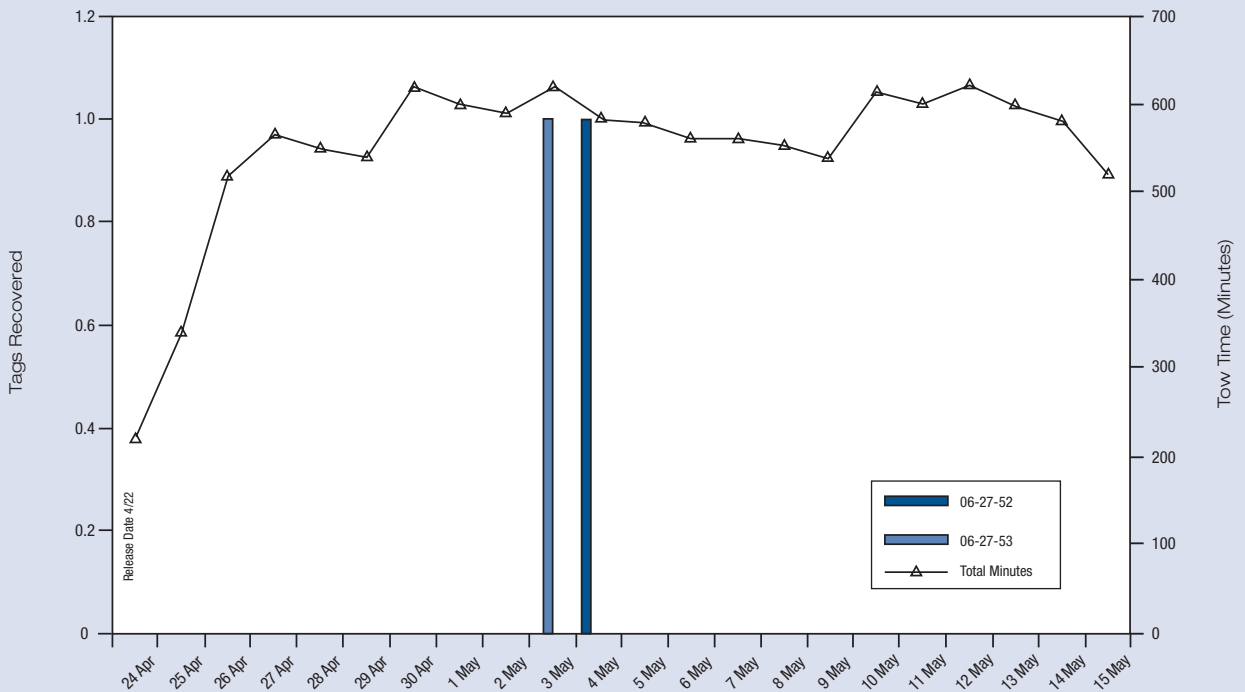


C-4. Coded Wire Tag Recovery Data

Chippis Island/Jersey Point I

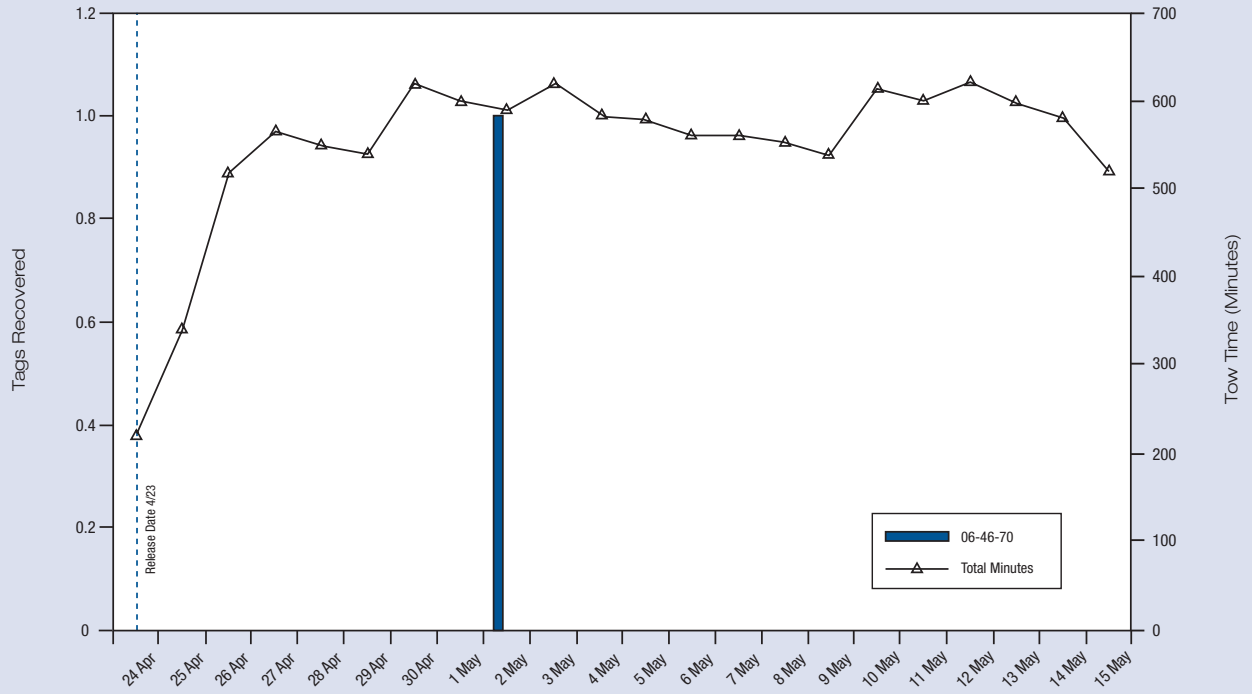


Antioch/Durham Ferry I



C-4. Coded Wire Tag Recovery Data

Antioch/Mossdale I



Antioch/Jersey Point I

