

B

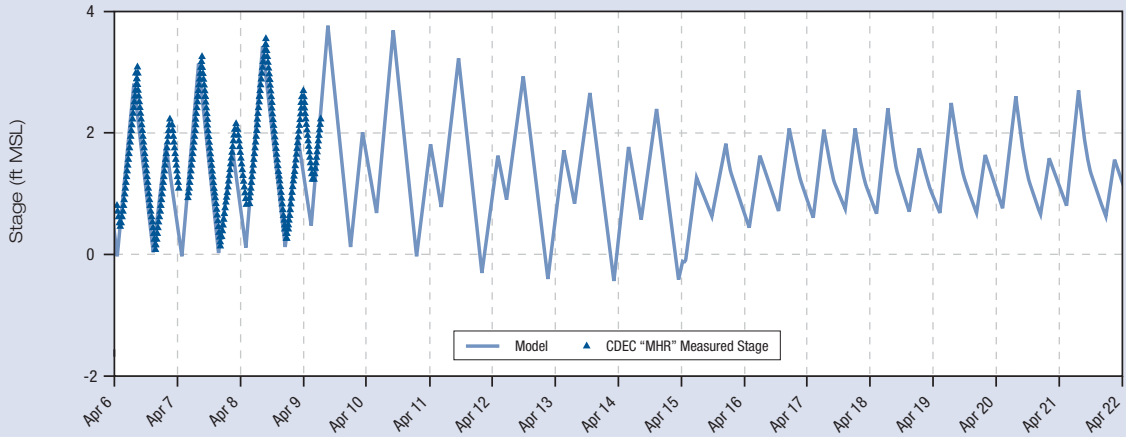
APPENDIX B

Head of Old River Barrier Operation

B-1. Forecasted Low-Low Tide Stage Middle River at Howard Road

As of April 6, 2004

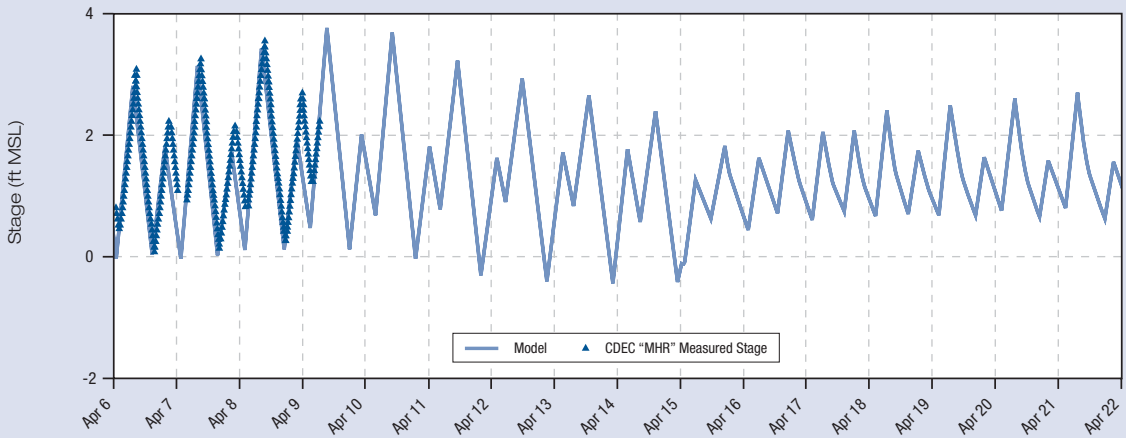
Note: 2 AG barriers tidally operated, GLC partial, All HORB culverts closed



Notes:
 All barriers closed on 4/15/04 except GLC.
 The DMC and Middle River barriers modeled with culverts tidally operated
 The GLC modeled partial barrier.

As of April 6, 2004

Note: 2 AG barriers tidally operated, GLC partial, 3 HORB culverts open

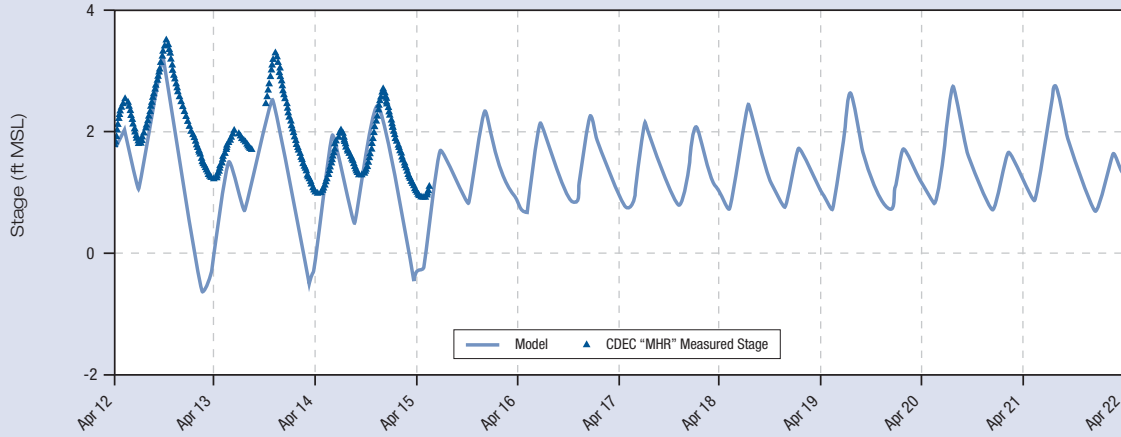


Notes:
 GLC barrier partially closed 4/9/04, MR barrier closed 4/12/04, DMC and HORB barriers closed 4/15/04.
 The DMC and Middle River barriers modeled with culverts tidally operated
 The GLC modeled partial barrier.

B-1. Forecasted Low-Low Tide Stage Middle River at Howard Road

As of April 12, 2004

Note: 2 AG barriers tidally operated, GLC partial, HORB 3 culverts open

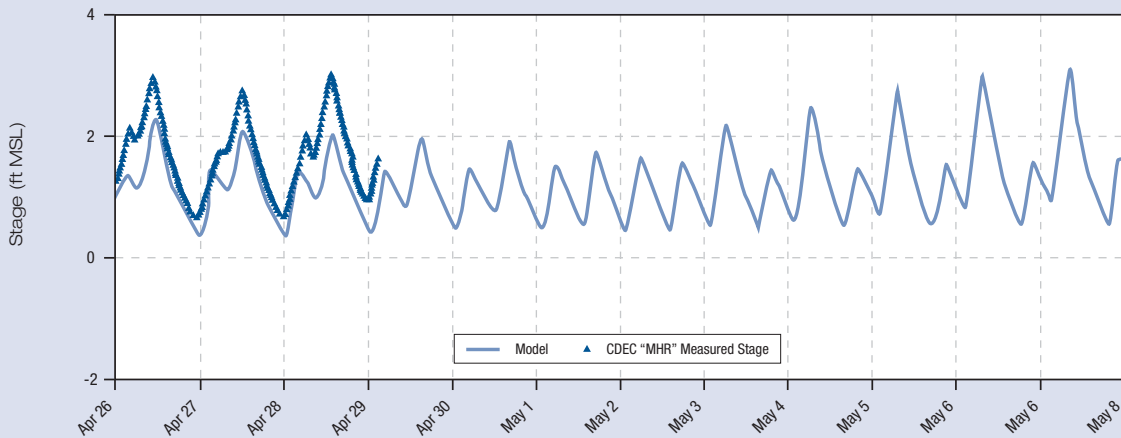


Notes:

GLC barrier partially closed 4/9/04, MR barrier closed 4/12/04, DMC and HORB barriers closed 4/15/04.
 The DMC and Middle River barriers modeled with culverts tidally operated
 The GLC modeled partial barrier.

As of April 26, 2004

Note: 2 AG barriers tidally operated, GLC partial, HORB 6 culverts open



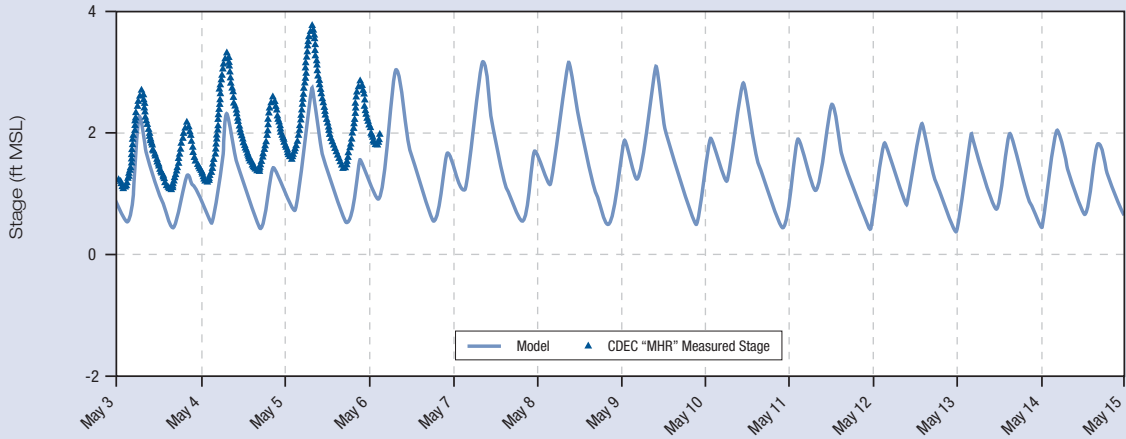
Notes:

GLC barrier partially closed 4/9/04, MR barrier closed 4/12/04, DMC and HORB barriers closed 4/15/04.
 The DMC and Middle River barriers modeled with culverts tidally operated
 The GLC modeled partial barrier.

B-1. Forecasted Low-Low Tide Stage Middle River at Howard Road

As of May 3, 2004

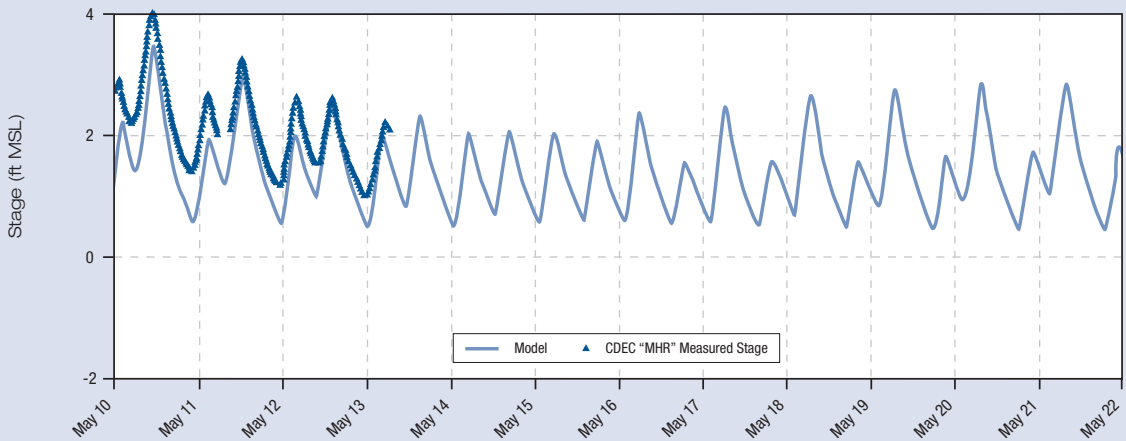
Note: 2 AG barriers tidally operated, GLC partial, HORB 6 culverts open



Notes:
 GLC barrier partially closed 4/9/04, MR barrier closed 4/12/04, DMC and HORB barriers closed 4/15/04.
 The DMC and Middle River barriers modeled with culverts tidally operated
 The GLC modeled partial barrier.

As of May 10, 2004

Note: 2 AG barriers tidally operated, GLC partial, HORB 6 culverts open

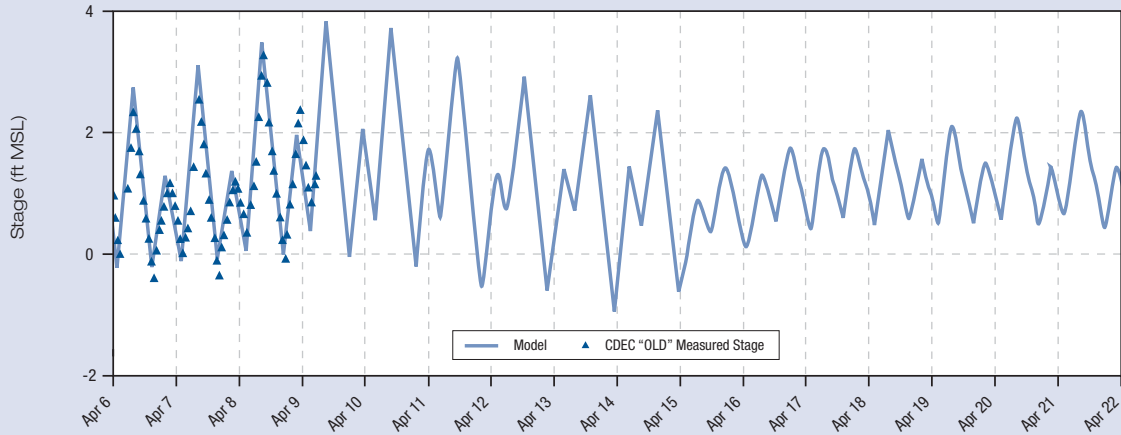


Notes:
 GLC barrier partially closed 4/9/04, MR barrier closed 4/12/04, DMC and HORB barriers closed 4/15/04.
 The DMC and Middle River barriers modeled with culverts tidally operated
 The GLC modeled partial barrier.

B-2. Forecasted Low-Low Tide Stage Old River near Tracy Road Bridge

As of April 6, 2004

Note: 2 AG barriers tidally operated, GLC partial, All HORB culverts closed

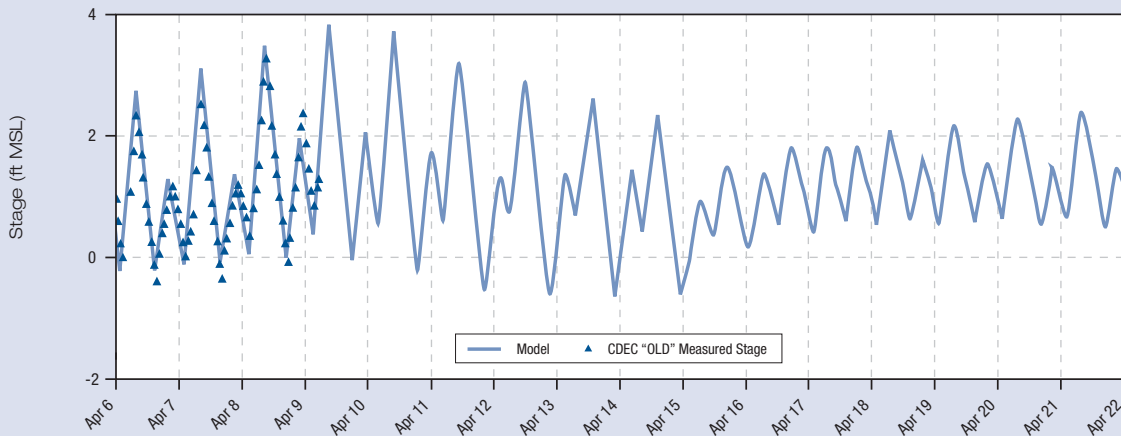


Notes:

All barriers closed on 4/15/04 except GLC.
The DMC and Middle River barriers modeled with culverts tidally operated
The GLC modeled partial barrier.

As of April 6, 2004

Note: 2 AG barriers tidally operated, GLC partial, 3 HORB culverts open



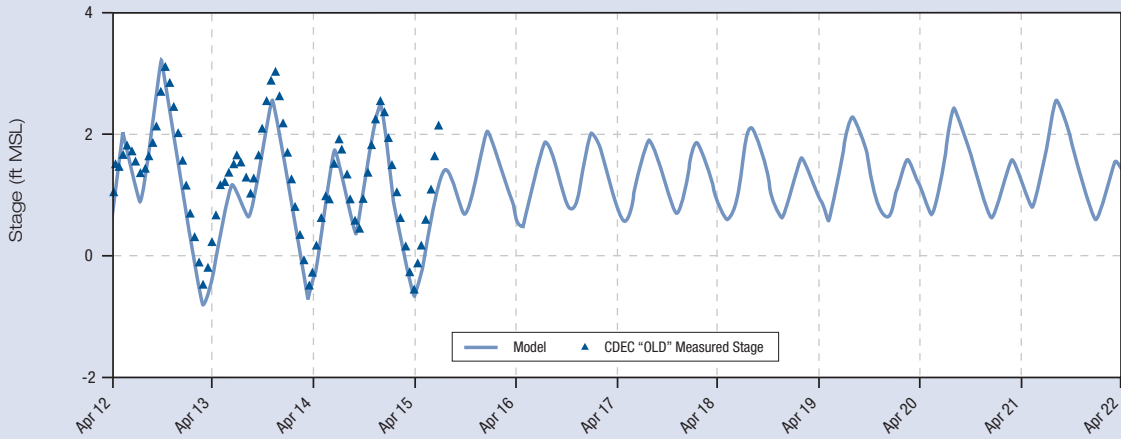
Notes:

GLC barrier partially closed 4/9/04, MR barrier closed 4/12/04, DMC and HORB barriers closed 4/15/04.
The DMC and Middle River barriers modeled with culverts tidally operated
The GLC modeled partial barrier.

B-2. Forecasted Low-Low Tide Stage Old River near Tracy Road Bridge

As of April 12, 2004

Note: 2 AG barriers tidally operated, GLC partial, HORB 3 culverts open

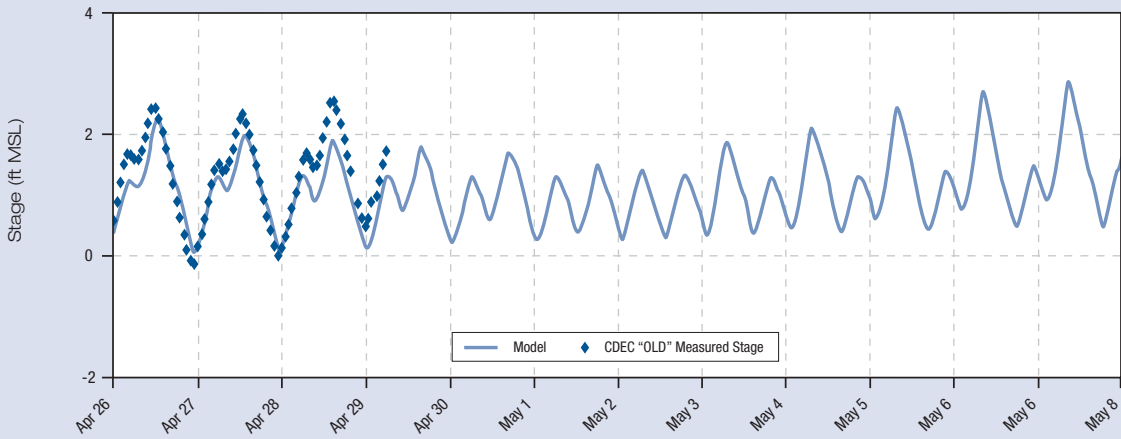


Notes:

GLC barrier partially closed 4/9/04, MR barrier closed 4/12/04, DMC and HORB barriers closed 4/15/04.
The DMC and Middle River barriers modeled with culverts tidally operated
The GLC modeled partial barrier.

As of April 26, 2004

Note: 2 AG barriers tidally operated, GLC partial, HORB 6 culverts open



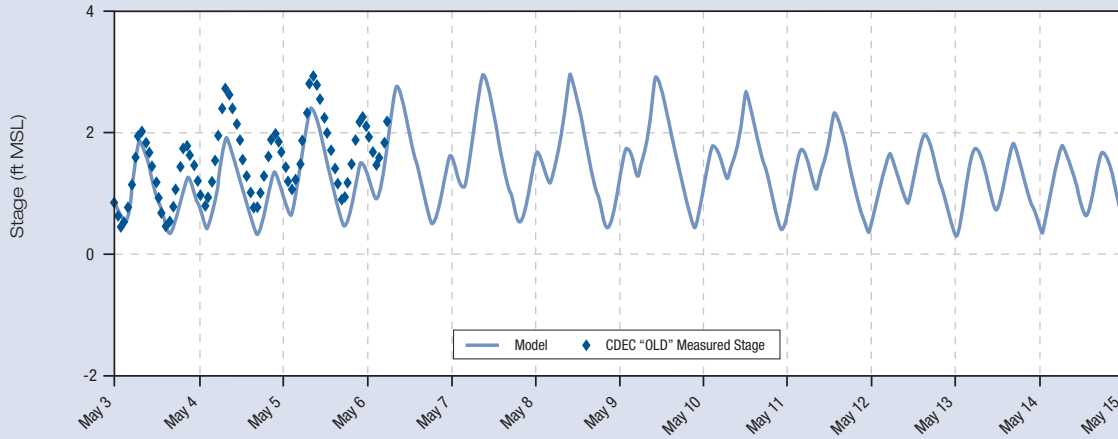
Notes:

GLC barrier partially closed 4/9/04, MR barrier closed 4/12/04, DMC and HORB barriers closed 4/15/04.
The DMC and Middle River barriers modeled with culverts tidally operated
The GLC modeled partial barrier.

B-2. Forecasted Low-Low Tide Stage Old River near Tracy Road Bridge

As of May 3, 2004

Note: 2 AG barriers tidally operated, GLC partial, HORB 6 culverts open

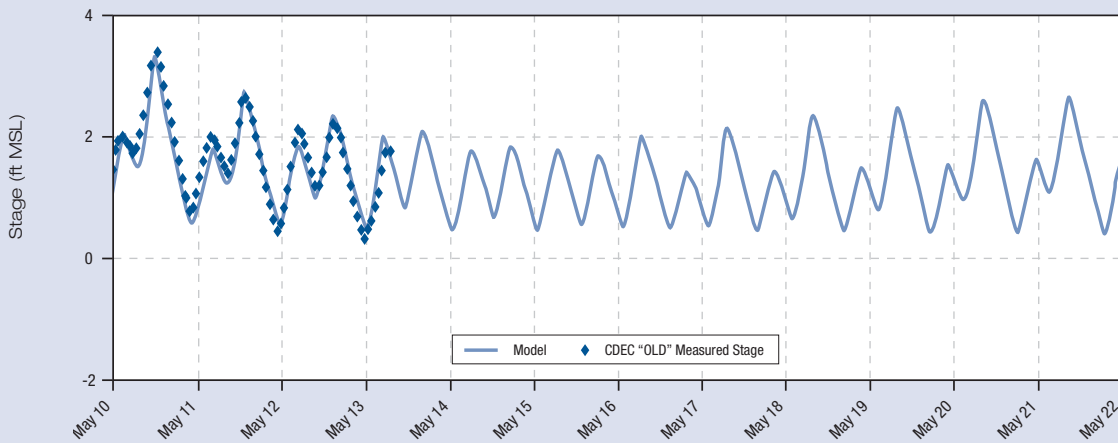


Notes:

GLC barrier partially closed 4/9/04, MR barrier closed 4/12/04, DMC and HORB barriers closed 4/15/04.
The DMC and Middle River barriers modeled with culverts tidally operated
The GLC modeled partial barrier.

As of May 10, 2004

Note: 2 AG barriers tidally operated, GLC partial, HORB 6 culverts open



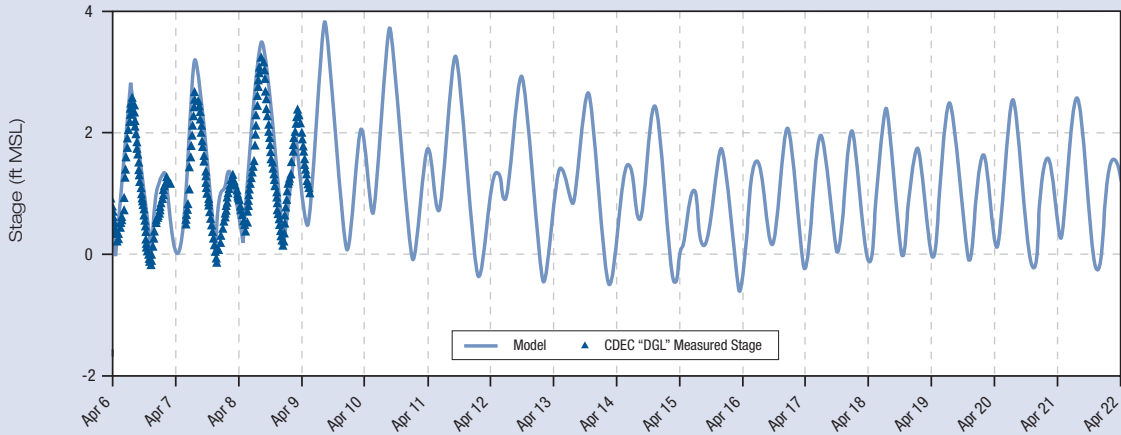
Notes:

GLC barrier partially closed 4/9/04, MR barrier closed 4/12/04, DMC and HORB barriers closed 4/15/04.
The DMC and Middle River barriers modeled with culverts tidally operated
The GLC modeled partial barrier.

B-3. Forecasted Low-Low Tide Stage Doughty Cut above GLC Barrier

As of April 6, 2004

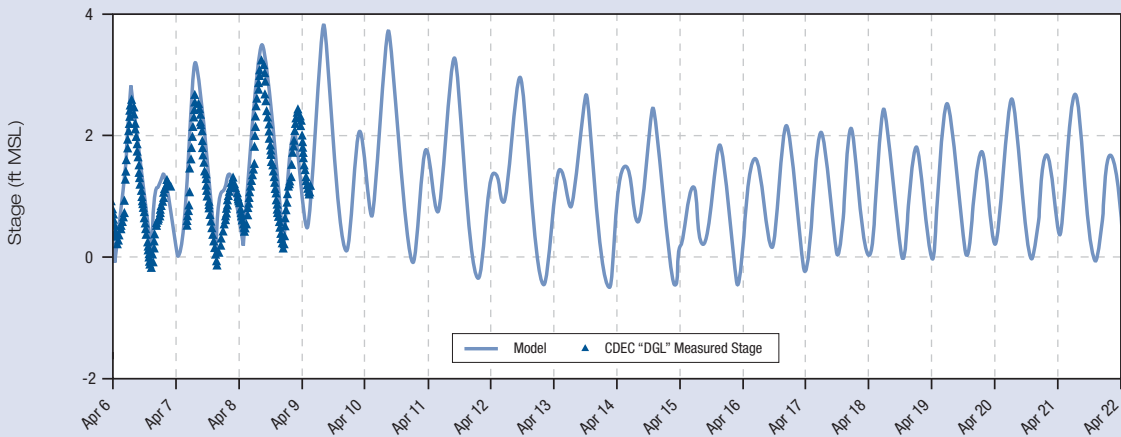
Note: 2 AG barriers tidally operated, GLC partial, All HORB culverts closed



Notes:
 All barriers closed on 4/15/04 except GLC.
 The DMC and Middle River barriers modeled with culverts tidally operated
 The GLC modeled partial barrier.

As of April 6, 2004

Note: 2 AG barriers tidally operated, GLC partial, 3 HORB culverts open

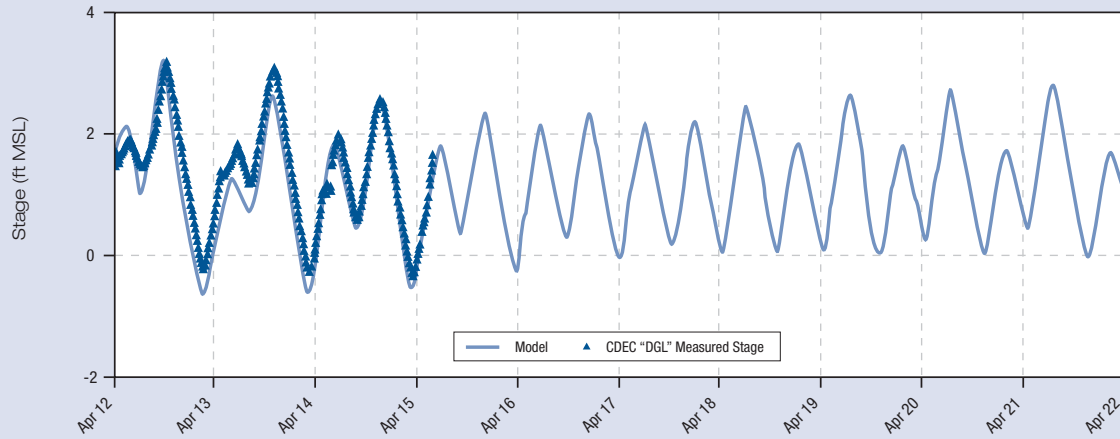


Notes:
 GLC barrier partially closed 4/9/04, MR barrier closed 4/12/04, DMC and HORB barriers closed 4/15/04.
 The DMC and Middle River barriers modeled with culverts tidally operated
 The GLC modeled partial barrier.

B-3. Forecasted Low-Low Tide Stage Doughty Cut above GLC Barrier

As of April 12, 2004

Note: 2 AG barriers tidally operated, GLC partial, HORB 3 culverts open

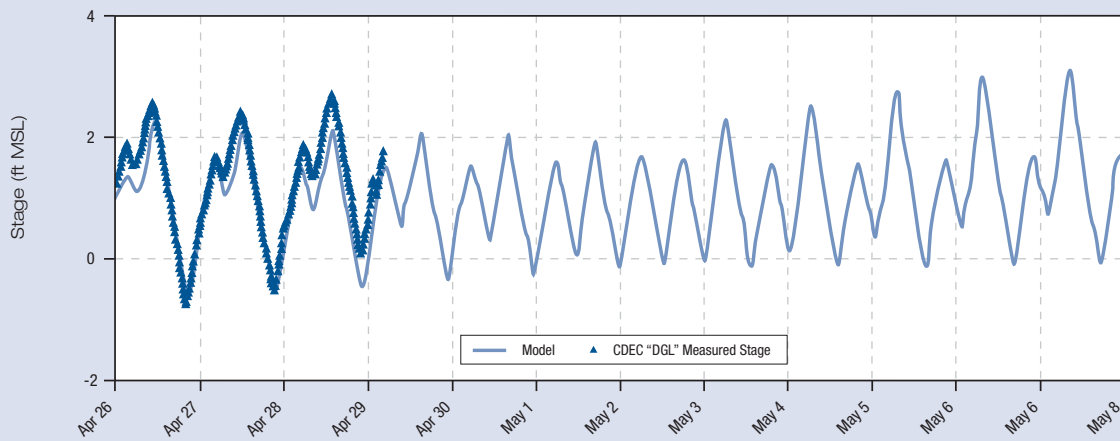


Notes:

GLC barrier partially closed 4/9/04, MR barrier closed 4/12/04, DMC and HORB barriers closed 4/15/04.
The DMC and Middle River barriers modeled with culverts tidally operated
The GLC modeled partial barrier.

As of April 26, 2004

Note: 2 AG barriers tidally operated, GLC partial, HORB 6 culverts open



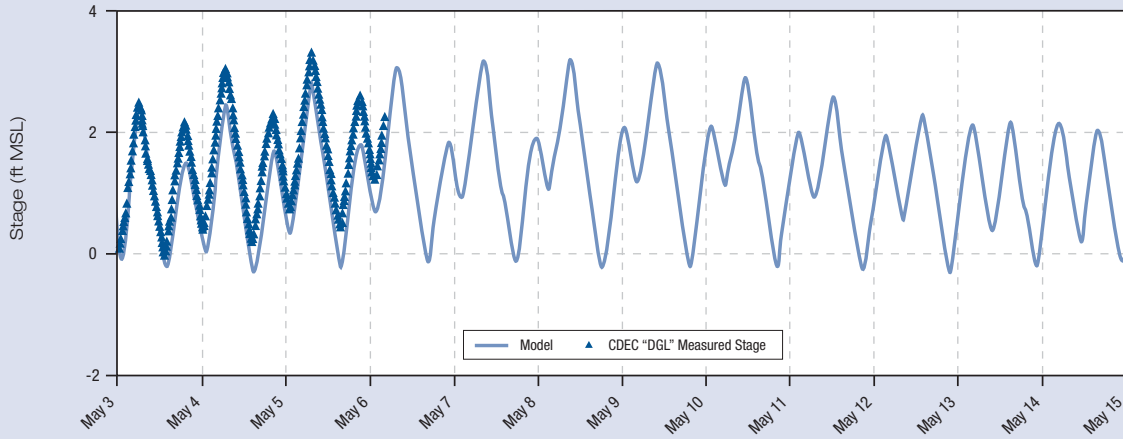
Notes:

GLC barrier partially closed 4/9/04, MR barrier closed 4/12/04, DMC and HORB barriers closed 4/15/04.
The DMC and Middle River barriers modeled with culverts tidally operated
The GLC modeled partial barrier.

B-3. Forecasted Low-Low Tide Stage Doughty Cut above GLC Barrier

As of May 3, 2004

Note: 2 AG barriers tidally operated, GLC partial, HORB 6 culverts open

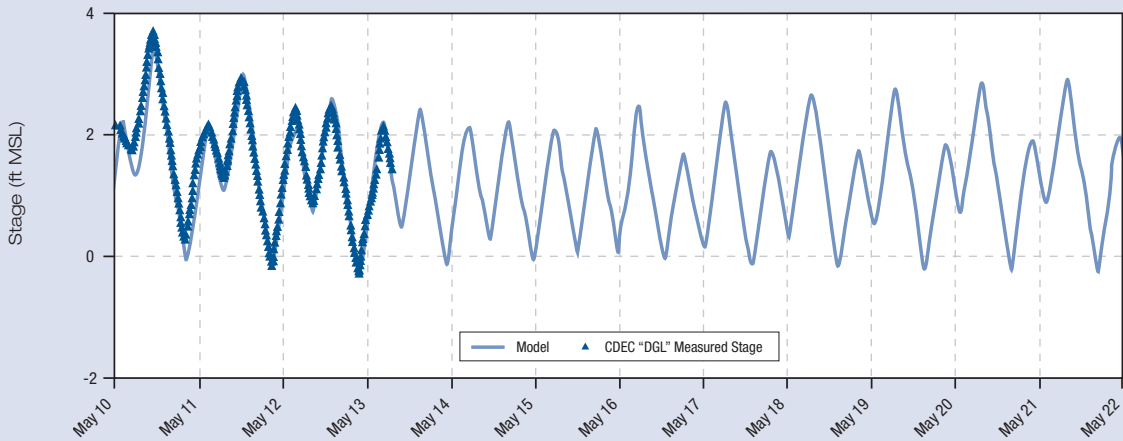


Notes:

GLC barrier partially closed 4/9/04, MR barrier closed 4/12/04, DMC and HORB barriers closed 4/15/04.
The DMC and Middle River barriers modeled with culverts tidally operated
The GLC modeled partial barrier.

As of May 10, 2004

Note: 2 AG barriers tidally operated, GLC partial, HORB 6 culverts open



Notes:

GLC barrier partially closed 4/9/04, MR barrier closed 4/12/04, DMC and HORB barriers closed 4/15/04.
The DMC and Middle River barriers modeled with culverts tidally operated
The GLC modeled partial barrier.